



TEXAS A&M UNIVERSITY

COMMERCE

ASSESSMENT OF GLOBAL COMPETENCE: WITH REGARDS TO FRESHMEN STUDENTS

Tobore Brume

Graduate Research Assistant

Department of Management (Business Administration)

Jennifer Hudson

Department of Institutional Effectiveness and Research

(Quality Enhancement Plan)

INTRODUCTION



- As the world grows ever smaller, there is a dire need for globally competent students
- Previous research shows performance is graded based on academic performance
- Global competence is defined as having an open mind while actively seeking to understand cultural norms and expectations of others, leveraging this gained knowledge to interact, communicate and work effectively in diverse environments (Hunter, 2004).



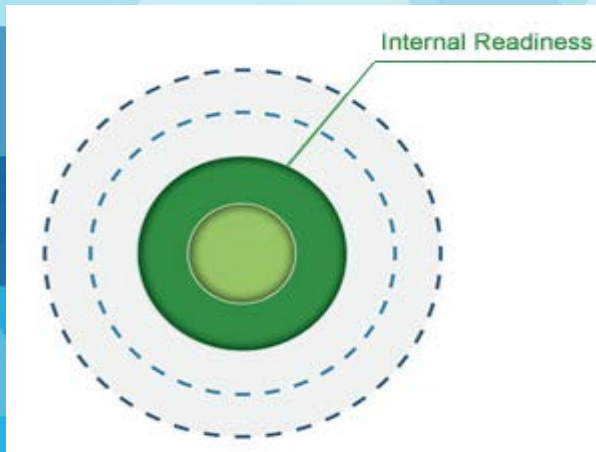
GCAA



Global
Competence
Aptitude
Assessment[®]

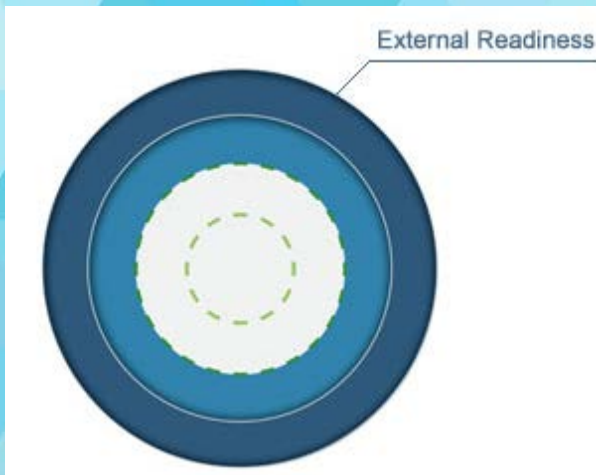


GCAA – IN DETAIL



Personas

“While working on a team project with a new student from Nigeria, it is important to?”



Acquired Knowledge

“What ancient civilization made great contributions to urban planning, architecture, language, and government throughout much of Europe?”



CURRENT STUDY

Purpose

To compare baseline scores of first time, full time freshmen students to get insights on their global competence at start of their tertiary education.

Methodology

Using simple means analysis to compare scores across the years, from 2014 – 2017, of students (2754 in total), who took the GCAA in their freshman year.

- GCAA uses 113 questions which are usually completed in 30-45mins



RESULTS

TOTAL STATISTICS		
Number Of Students	Internal Readiness	External Readiness
2754	67.42857143	54.92857143

Average - showing trend line



Self Awareness

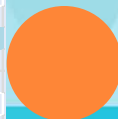


Historical Perspective



RESULTS — CONT'D

	Spring 2018				
	Internal Readiness	Self-Awareness	Risk Taking	Open-Mindedness	Attentiveness to Diversity
Average	71	75	68	71	70
	External Readiness	Historical Perspective	Global Awareness	Intercultural Capability	Collaboration Across Cultures
Average	63	51	59	70	68
	Fall 2017				
	Internal Readiness	Self-Awareness	Risk Taking	Open-Mindedness	Attentiveness to Diversity
Average	69	72	68.5	68.5	68
	External Readiness	Historical Perspective	Global Awareness	Intercultural Capability	Collaboration Across Cultures
Average	53.5	33.5	45.5	66	65
	Spring 2016				
	Internal Readiness	Self-Awareness	Risk Taking	Open-Mindedness	Attentiveness to Diversity
Average	67	72	67	64	66
	External Readiness	Historical Perspective	Global Awareness	Intercultural Capability	Collaboration Across Cultures
Average	50	33	42	58	63
	Fall 2016				
	Internal Readiness	Self-Awareness	Risk Taking	Open-Mindedness	Attentiveness to Diversity
Average	69	72	69	69	67
	External Readiness	Historical Perspective	Global Awareness	Intercultural Capability	Collaboration Across Cultures
Average	54	34	44	67	66
	Spring 2015				
	Internal Readiness	Self-Awareness	Risk Taking	Open-Mindedness	Attentiveness to Diversity
Average	67	69	68	67	65
	External Readiness	Historical Perspective	Global Awareness	Intercultural Capability	Collaboration Across Cultures
Average	46	35	33	57	55
	Fall 2015				
	Internal Readiness	Self-Awareness	Risk Taking	Open-Mindedness	Attentiveness to Diversity
Average	70	73	70	69	68
	External Readiness	Historical Perspective	Global Awareness	Intercultural Capability	Collaboration Across Cultures
Average	55	35	46	67	67
	Fall 2014				
	Internal Readiness	Self-Awareness	Risk Taking	Open-Mindedness	Attentiveness to Diversity
Average	59	71	48	67	52
	External Readiness	Historical Perspective	Global Awareness	Intercultural Capability	Collaboration Across Cultures
Average	63	47	67	63	73



IMPLICATIONS

- The results show that the GCAA is a valid means of providing an insight to the global competency of students to provide a baseline for comparison
- This helps as a guide in creation and development of programs which would improve the global competency of the students
- Also, assists in structuring curriculum for key concentration areas which students need guidance



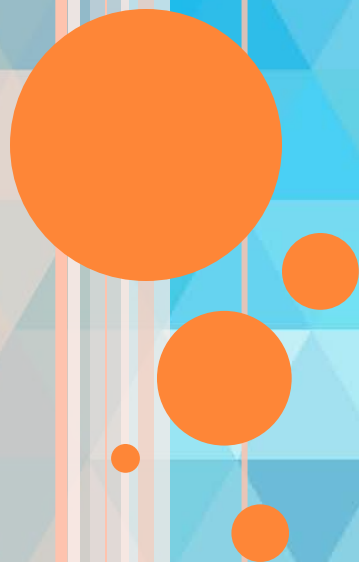


TEXAS A&M UNIVERSITY

COMMERCE

THANK YOU

Questions?



blue